

# **Accessing Atlantic Provincial/City GIS Resources**

Atlantic DLI 2010

Peter Webster

# New Brunswick

- **Service New Brunswick Geographic Data & Maps section.** <http://www.snb.ca/gdam-igec/e/2900e.asp>
- **UNB – Maps and GIS.** <http://www.lib.unb.ca/gddm/maps/>

**Contact: Siobhan Hanratty. hanratty@unb.ca.**

**Contact: Elizabeth Hamilton, (506) 453-4970.  
hamilton@unb.ca**

# Newfoundland and Labrador.

- NFL. Environment and Conservation. Surveys and Mapping - Lands .

<http://www.env.gov.nl.ca/env/lands/sm/>

Contact: Bob Budgell (community mapping)

[bbudgell@gov.nl.ca](mailto:bbudgell@gov.nl.ca): Allan Chafe (Resource mapping)

[Achafe@gov.nl.ca](mailto:Achafe@gov.nl.ca): Jeff Wood (Data Licensing)

[jwood@gov.nl.ca](mailto:jwood@gov.nl.ca)

# Nova Scotia.

- Service Nova Scotia - Geographic Information.  
<http://www.gov.ns.ca/snsmr/land/>
- GeoNova Portal. <http://www.gov.ns.ca/geonova/>
  - Data locator. [http://www.gov.ns.ca/geonova/home/products/softpage/data\\_locator.asp](http://www.gov.ns.ca/geonova/home/products/softpage/data_locator.asp)
  - Nova Scotia Geographic Data Catalogue.  
[http://www.gov.ns.ca/geonova/home/discover\\_geographic\\_data.asp](http://www.gov.ns.ca/geonova/home/discover_geographic_data.asp)

Contact: Kevin Legere: [legerekp@gov.ns.ca](mailto:legerekp@gov.ns.ca) (902)667-6286

# Halifax

- HRM's Geographic Information System and Services. <http://www.halifax.ca/giss/>

**Contact: explorehrm@halifax.ca**

# Prince Edward Island.

- PEI GIS Data. <http://www.gov.pe.ca/gis/>

**Contact: Sandra Jamieson. G.I.S. Technician.  
PEI Department of Environment, Energy &  
Forestry. Phone 902-368-5634 Fax 902 -368-  
5661 E-Mail sljamieson@gov.pe.ca**

# GeoBase Canada.

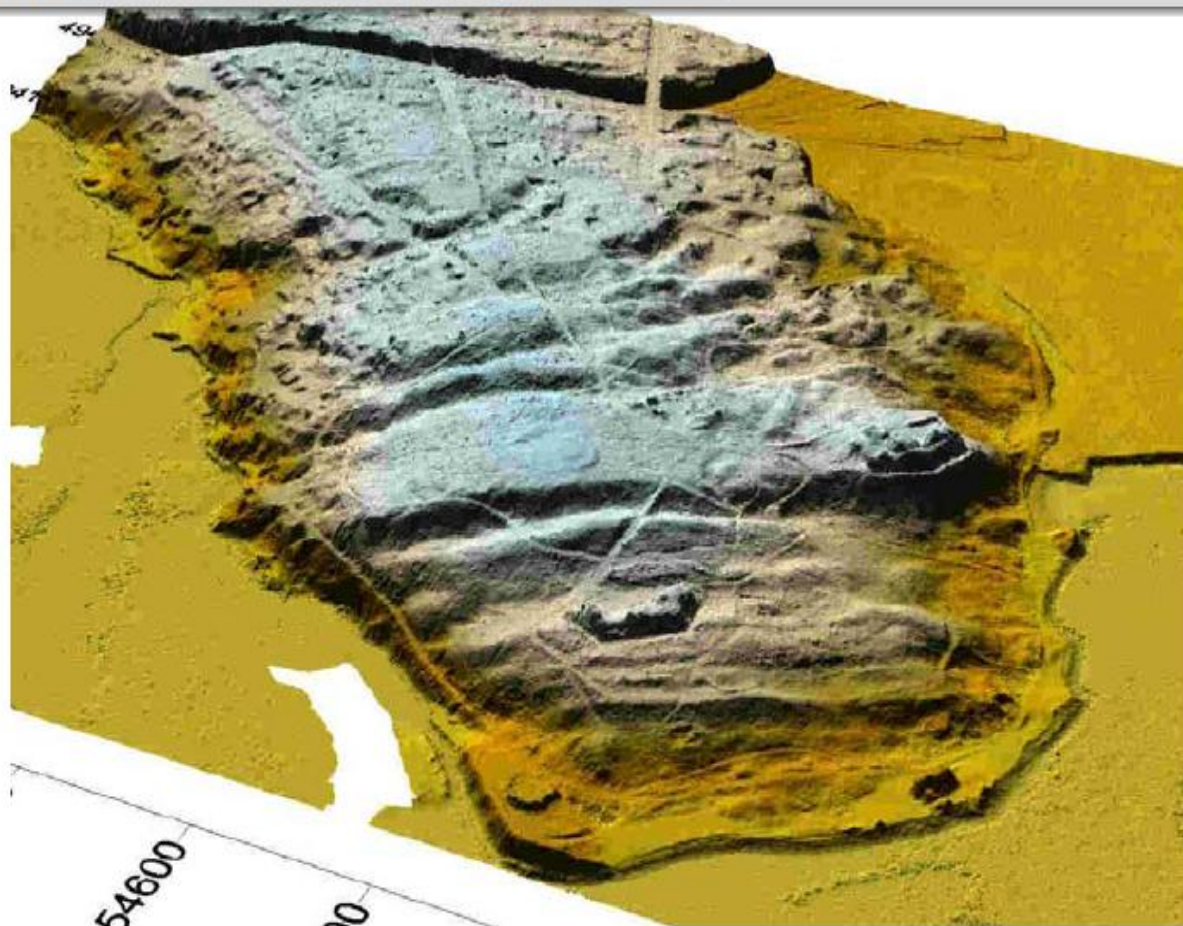
- <http://www.geobase.ca/>

# LIDAR and Digital Elevation Models (DEM).

- **Adapting to Sea Level Rise: Halifax Harbour Harbour, Roger Wells , Nova Scotia.**

**<http://www.gnb.ca/0009/0373/0004/pdf/Wells-e.pdf>**





Point Pleasant Park, Halifax,  
December 1998

